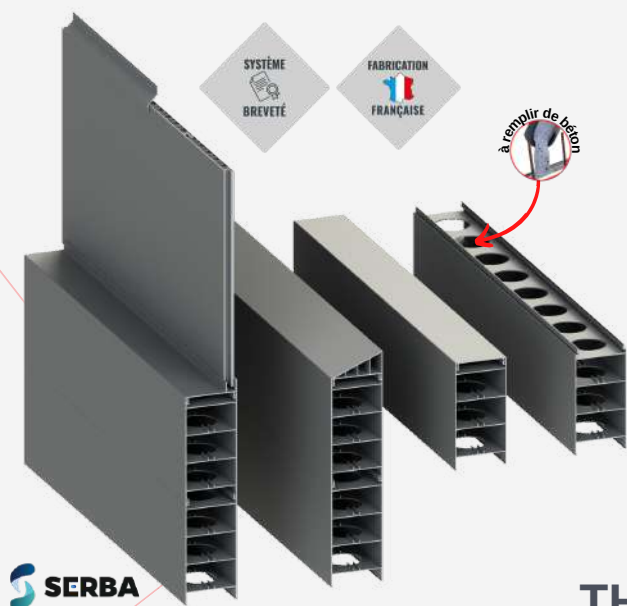


SRP Concept settles down in the heart of the farms...



To facilitate the work of livestock professionals and save them precious time,

- both in the **construction or renovation phase** of farm buildings
- as well as in **their daily management** during maintenance or sanitation,

SRP Concept has imagined for them **a modular construction material made of 85% recycled PVC, to be filled or not with concrete**, accessible to all and provided with assets dedicated to the agricultural sector :

**the modular formwork,
THE time-saving constructive solution !**

Strong, fast and versatile, the **SRP Concept formwork** is an alternative to traditional construction methods and replaces the use of concrete walls, block walls, prefabricated walls... **Easy to install, including in self-construction**, it is **particularly adapted to the creation and cleaning of all types of agricultural buildings** thanks to its non-porous material limiting the incrustation of bacteria.

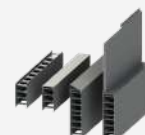
With its modular process and its range of complementary parts, the formwork block simplifies the construction of **stringers, scraper walls** (removable or fixed), **peripheral walls, cubicle walls, loading bays, manure storages** (dry droppings) or **even walls for milking parlours, walls between poles, horse stalls, storage spaces... and many other possibilities** studied for **cattle farms** (milk or meat), pigs, sheep, goats, poultry... but also for horses !



**... and wins
his 1st award !**

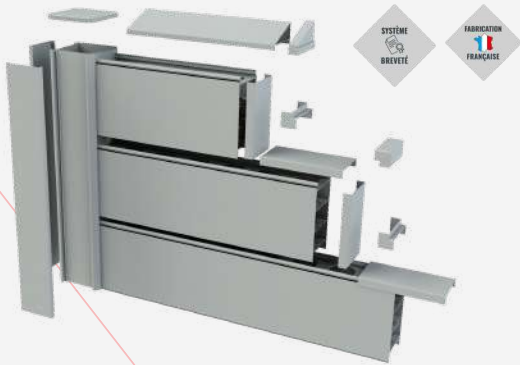
SOMMETS 2022

Convinced by its innovative concept and its technical, sanitary and environmental arguments, the jury of the **Innovation Contest of the Salon de l'Élevage de Clermont-Ferrand**, awards the **Coffrant SRP Concept a Sommet d'Or 2022!**



The formwork, an innovative construction concept

A patented technological innovation manufactured in France, the SRP Concept formwork is a modular construction system, offered as an alternative to traditional construction methods. Strong, fast and versatile, this innovative concept is so light to handle that it does not require any handling equipment (3.739 kg/linear meter). It comes in the form of interlocking modules, made up of double-walled blocks of 85% recycled PVC, consisting of cells that can be filled with concrete or not, depending on the structure.



An eco-responsible material : this building block combines the technical performance and ecological qualities required in this sector. Its material was designed in a local company, expert in the design and extrusion of PVC profiles, and is derived from the co-extrusion process. This highly technical construction solution was also designed to be reused by companies in the region. Robust and durable, while being insulating and recyclable, it is positioned in an eco-responsible approach and on the principle of the circular economy : fundamental values supported by SRP CONCEPT and strong arguments that allow it to minimize the environmental impact.

Expanding a farm, renovating an existing building, quickly starting a new agricultural production activity : with the formwork, it's child's play !

Like a construction game : reinforce, assemble, seal... and that's it !

The formwork is easy to assemble in any weather. SRP Concept modules can be assembled like a building set : just plug in, clip and seal, it's easy and accessible to everyone.

Its implementation is faster than a traditional construction with breeze blocks and requires no specific training. Its concept, based on an interlocking system, by clipping, has been the subject of an in-depth study and technical justifications in a report by Serba, a concrete design office.



A complete range of products...

**And clever accessories
to meet the specific needs of the agricultural sector**



The mechanical behavior of the formwork has been justified by the SERBA engineering office through a technical report.

**The SRP Concept know-how
concentrated in a solid and light material**



The formwork, a light material for advantages of... weight !

To improve the working conditions of livestock professionals on a daily basis, SRP Concept has developed a casing product that concentrates many advantages related to the specificities of their jobs and meets their expectations in terms of productivity, eco-responsibility and energy performance.

Formwork SRP Concept :

THE "Solution (solution) Rapide (quick) Polyvalente (multipurpose), respectful of the environment

The SRP Concept formwork is a material specially adapted to the construction and renovation of all types of farm buildings and storage areas. It can be used as a formwork to realize your stringers, scraping walls, gutters, partition walls... and in many other configurations for farms.

Creation, extension, rehabilitation of agricultural works and breeding units, fodder sheds, warehouses and all types of farm installations : **the formwork block simplifies construction, encourages self-construction by allowing rapid implementation of all types of agricultural works as well as effective sanitation of these spaces thanks to the non-porous material it is made of.**

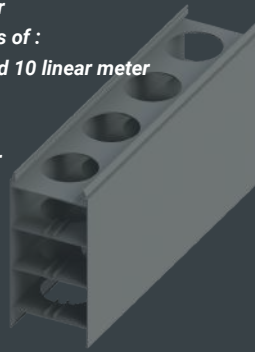
Complying with the biosafety rules, the casing allows to have quickly optimal installations and to benefit from improved working conditions as well as from daily advantages : time saving, reduction of electricity and water expenses during cleaning !

Advantages :

- Speed and ease of implementation
- Rot-proof, quality, solidity and longevity of the material
- Time saving on a daily basis simplified cleaning, disinfection and maintenance
- Water saving during hygienization
- Complies with biosafety regulations
- Additional protection against external aggressions
- Air insulation and water resistance

SRP Concept formwork :

- 85% recycled PVC formwork block in grey mass-colored color
- Available in lengths of : 3, 4, 5, 6, 7, 8, 9 and 10 linear meter
- Prices on request.
- Information on : www.srpconcept.fr



Strong and yet... light !

Made of PVC material, the SRP Concept formwork weighs only 8.243 lbs per linear meter ! **Light to handle**, with no need for handling equipment, **it facilitates daily handling and assembly.**



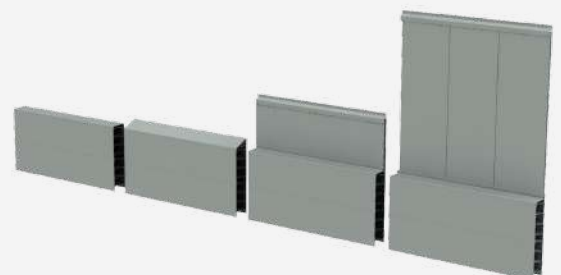
Its composition allows it to provide additional protection against external aggressions thanks to the combination of PVC and concrete. Completely rot-proof, the SRP Concept formwork block is reliable and highly resistant, thus ensuring a longer life for all your constructions.



Easy to maintain, the exterior coating of the formwork allows for simple, effective and quick cleaning.

With the formwork, the constraints in terms of maintenance and hygienization of agricultural buildings are minimized, guaranteeing professionals precious time savings on a daily life. In compliance with biosafety regulations, its non-porous material, unlike that of cinder block and concrete, prevents the incrustation of bacteria and allows for simple and effective disinfection. Its smooth and perfect surface has an excellent adaptation to the cleaning agents and allows an easy and fast washing.

**Find on www.srpconcept.fr
all the SRP Concept know-how
in agricultural configurations
designed for you**



The formwork, heart of all your projects

The tailor-made construction solution...

... for stringers

Offered in a grey tinted finish, the formwork is used to implement the horizontal structural elements used as a base for your construction.

Take advantage of its convincing abilities !

The formwork is a great ally to create all your stringers : in foundation, in periphery of a building, in base...

Simply **clip the formwork** together and, once **filled with concrete**, in accordance with our technical recommendations, cover it with the appropriate **coverings** : **flat coverings, flashing**, etc. **You can choose from a complete range of accessories compatible with the formwork !**

To complete the assembly and ensure a perfect seal for your project, simply fit the **finishing pieces** into place : **it's quick and easy !**



... for scraper walls

SRP Concept recommends the use of its products for the realization of **2 types of low scrapers thanks to a trick in addition !**

2 possibilities :

- **fixed scraper walls** by filling the formwork with concrete
- **removable scraper walls** with the **SRP base** provided for this purpose. Fixed to the ground with a concrete screw, the base is placed inside the formwork : **the walls are easily dismantled !** Practical, it allows **to transform the building without tedious demolition**, to benefit from a **multipurpose breeding building** and to **quickly diversify the activity**.



A + to save time
if a change of production is necessary !

... and for many other configurations !

